



Cal Power

Via Acquanera, 29
tel. 031.526.566 (r.a.)
info@calpower.it

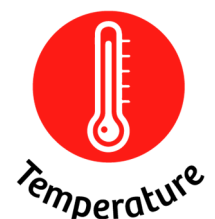
22100 COMO
fax 031.507.984
www.calspower.it

TEMPERATURE CHAMBER

(- 75 °C ...+ 180 °C)

**Model:
TK-190 CKULT**

- Material temperature resistance and product testing
 - Maintaining superior temperature & Rh stability
 - Sample conditioning prior to other tests
 - Data loggers and sensors calibration
 - Temperature controlled test polygon
 - World class metrology performance
 - Accelerated ageing
 - Stress tests



Device description:



Fan for internal air circulation with speed control

7" capacitive touch screen controller with user friendly interface, advance settings options, Ethernet and USB communication ports

2 level over temp. protection:
1. 5°C over set point heating disabled
2. 10°C above max. temp mechanical shut off

Extensive heat insulation shield on all chamber sides and doors

Main switch

Access port with both end plugs Ø50 mm (On left side)

All exterior in galvanized and powder coated aluminized steel

Door sealed with double soft profile silicone seal to ensure perfect tightness

Heavy duty closing mechanism with key lock

Height Adjustable stainless steel wire shelves (1 pcs included)

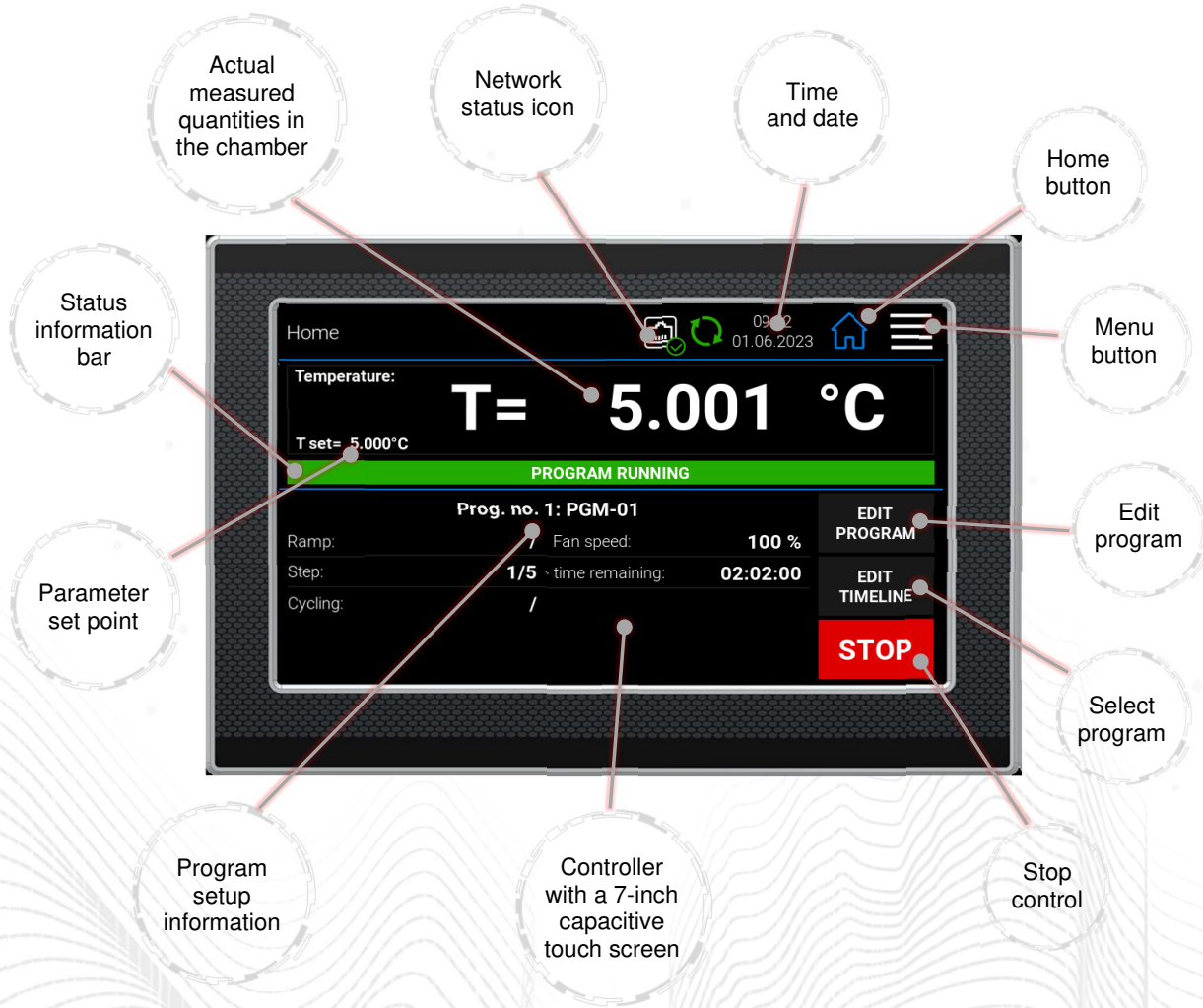
Full door heated observation window with LED illumination

Heavy duty swivel wheels with brake for simple manipulation

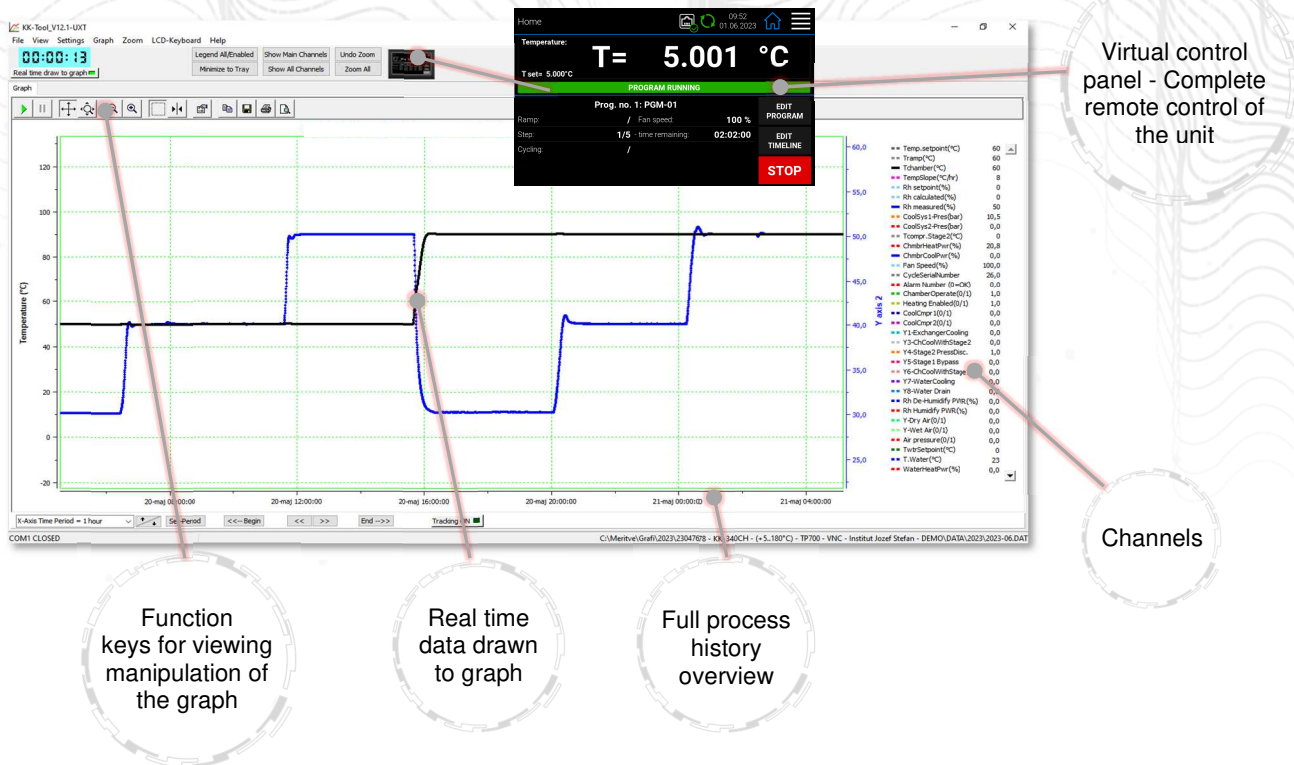
Full 4 side maintenance access to ref. system

Fully stainless-steel interior chamber

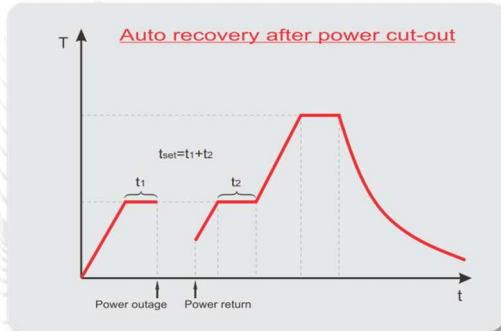
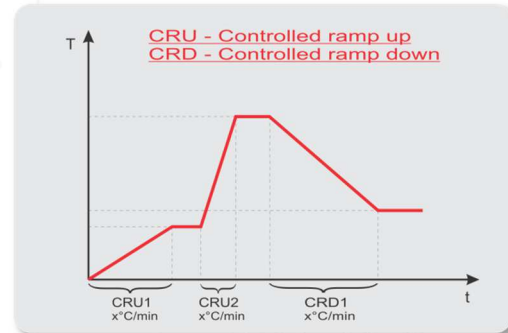
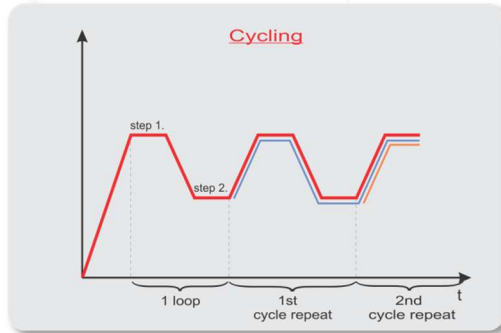
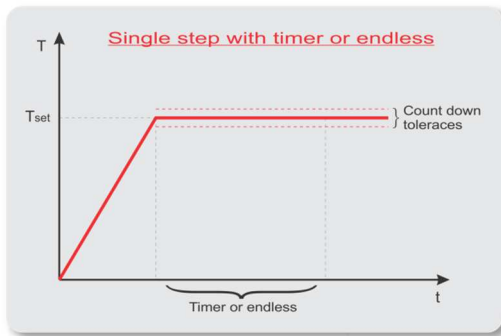
Touch display with advanced controller functions:




tk-Tool software for PC (free – included with every unit):



Controller functions:



	TK-190 CKULT
	
External dimensions (WxHxD) [mm]	835 x 1721 x 1126
Internal dimensions (WxHxD) [mm]	610 x 615 x 510
Volume [L]	~ 190
Temperature range [°C]	- 75 ...+ 180
Heat up rate [°C/min] (according to EN 60068-3-5)	2,2
Cool down rate [°C/min] (according to EN 60068-3-5)	2,2
Temperature display res [°C]	0.1
Temperature set res. [°C]	0.1
Temperature stability [°C]	1,0 °C @ - 75 °C ± 0,1 °C @ 50 °C 50% Rh ± 0,1 °C @ 90 °C 90% Rh ± 0,5 °C @ 180 °C
Temperature uniformity [°C]	± 1,2 °C @ - 75 °C ± 0,5 °C @ 50 °C 50 % Rh ± 0,5 °C @ 90 °C 90 % Rh ± 1,7 °C @ 180 °C
Temperature control	PID (PT-100)
Power supply	3x400V 50/60Hz
Wattage [W]	6500
Interface	USB and Ethernet
Shelve	1 (max 8)
Shelve capacity [kg]	35
Max capacity [kg]	80
Observation window	As standard
Access port [mm]	Ø 50 (left side)
Noise [dBA] @ 1 m distance	67
Weight [kg]	440

**All performance in controlled environment ($T_{ambient} = 22 \text{ °C} \pm 3 \text{ °C}$)!*

**Accessories might affect performance!*

