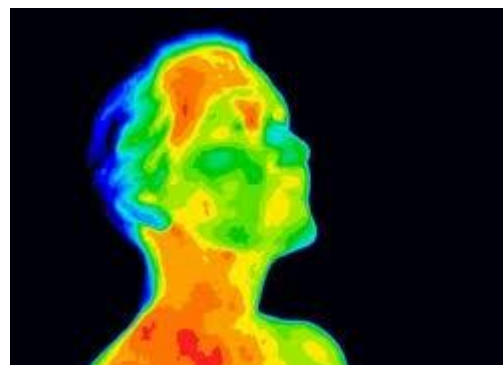


BLACK BODY LBB 70

Leyro Instruments has developed a precision Black Body Calibrator, for real-time measurement, to give a quick response to manufacturers of IR thermal imaging cameras. With the current COVID-19 Pandemic spreading throughout the world. The BLACK BODY by Leyro allows the detection of fever by comparison, allowing an immediate and non-invasive response in people. The LBB 70 provides a point of comparison and greater accuracy in measurement, along with IR thermal imaging cameras and that can help in Hotels, Hospitals, large commercial areas, factories, airports, train stations, or any space with high traffic of people, to prevent the spread of the disease. The Black Body of Leyro LBB 70 allows to avoid any error or drift in the measurement over the reference point, in the field of vision of the thermal imager. This equipment has been Specially designed for this purpose, providing a real and precise reading point, compatible with all cameras on the market, allowing it to be used 24/7.



APPLICATIONS

High traffic of people
Thermographic Camera Manufacturers
Fast non-invasive measurements
Tripod mounting

HIGHLIGHTS

Stability 0,05 °C
Accuracy 0,3 °C
Measurement diameter 57 mm
Resolution 0,1 °C
Temperature Range 30 ... 70 °C
Continuous measurement 24/7

General Information

Fast, non-invasive real-time measurements.
Prevents measurement errors
Compatible with any model of thermal imaging camera and infrareds on the market
Wide level of use, any space with high flow of people
Tripod mounting thanks to the adapter at the bottom center of the M6



Technical data

Application temperature range °C	30 ... 70 °C (°F or °C user selectable)
Temperature accuracy	+/-0.3 °C
Black body diameter	57mm
Resolution	0.1 K
Emissivity	0.96 +/-0.02
Supply	100 / 240 Vac 50/60Hz
Power Consumption	86 W Max.
Operating temperature	0 ... 50 °C
Weight	2 Kg Aprox.
Dimensions	Width 142 x Length 225 x Height 150 mm

Scope of delivery

Basic Instrument LBB 70

Traceable calibration certificate 3.1 The certificate is issued by means of a primary standard probe RTD in contact with the block

Power cord 1.8 mts.

Instruction manual English

Made in Europe

The logo for Cal Power, featuring the word "Cal" in a bold, black, sans-serif font and "Power" in a bold, red, sans-serif font, both in a slightly italicized style. The text is set against a white background with a thin black horizontal line underneath.

Via Acquanera, 29 22100 COMO
tel. 031.526.566 (r.a.) fax 031.507.984
info@calpower.it www.calspower.it