



Quick Start Guide

Hypot[®]

Models 3805, 3855, 3865, 3870, 3880



SAFETY CHECKLIST

- S**urvey the test station. Make sure it is safe & orderly.
- A**lways keep unqualified/unauthorized personnel away from the test area.
- F**amiliarize yourself with safety protocols in the event of a problem.
- E**xercise caution and never touch products or connections during a test.
- T**rain operators. Never touch clips directly and always connect the return lead first.
- Y**ou should always know when a test is being performed.



WARNING: THIS GUIDE WAS CREATED FOR OPERATORS HAVING SOME FAMILIARITY WITH ELECTRICAL SAFETY TESTING. AN ELECTRICAL SAFETY TESTER PRODUCES VOLTAGES AND CURRENTS THAT CAN CAUSE HARMFUL OR FATAL ELECTRIC SHOCK. TO PREVENT ACCIDENTAL INJURY OR DEATH, THESE SAFETY PROCEDURES MUST BE STRICTLY OBSERVED WHEN HANDLING AND USING A TEST INSTRUMENT. CONTACT US AT INFO@ARISAFETY.COM FOR MORE INFO ON HOW TO GET TRAINED ON ELECTRICAL SAFETY TESTING.

INSTRUMENT SETUP



WARNING: LOCATE A SUITABLE TESTING AREA WITH A THREE-PRONG, GROUNDED OUTLET. BE SURE THAT YOUR THREE-PRONG OUTLET HAS BEEN TESTED FOR PROPER WIRING. READ THE SAFETY CHECKLIST OF THIS GUIDE BEFORE STARTING TO TEST.

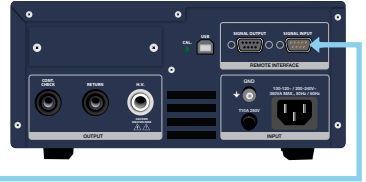
Find parts for Instrument Setup in **Section 1 of your Accessory Box.**

- 1 Connect the female end of the power input plug into the rear of the instrument and plug the male end of the cord into a grounded power source.

To Grounded
Power Source

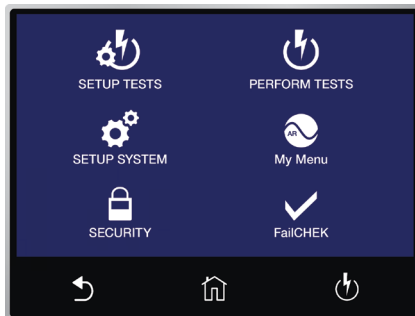


- 2 Plug the Interlock Disable Key into the Signal Input connector on the rear panel of the instrument. Instrument will not output Voltage with Interlock Disable Key unplugged.



- 3 Push the POWER button to turn the instrument ON.




The initialization screen will appear. After three seconds the Home screen will appear as shown below.

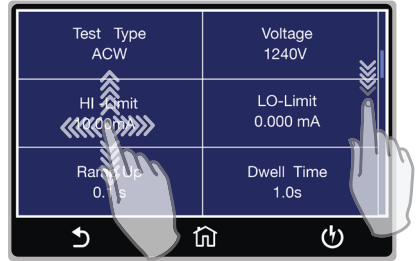
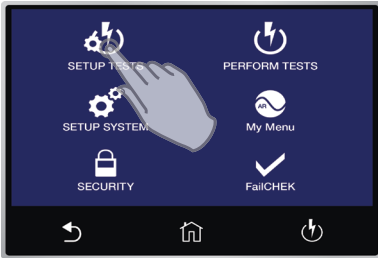


Home Screen

TOUCH SCREEN OPERATIONS



-  Back
-  Home
-  Test Screen

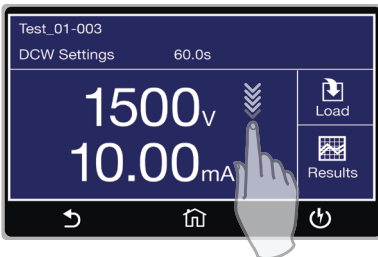


TOUCH

Tap the virtual buttons to open various functions.

SWIPE UP, DOWN, LEFT & RIGHT

Simple swipes allow you to quickly move through screens & parameters



DRAG & DROP

Drag and drop meters on your Perform Test screen. Simply touch, hold, and drag meter to any of the other meter locations.



TOUCH & HOLD

Touch and hold test file or test step to show available Quick Actions: Save As, Delete, Insert, etc.

TEST SET UP



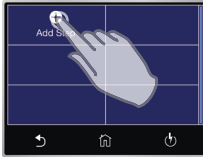
TAP SETUP TESTS
Home Screen



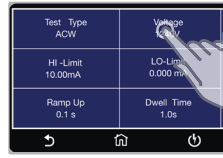
TAP ADD FILE
File Screen



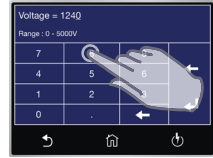
ADD FILE NAME
Tap the ENTER () key to save your selection




TAP ADD STEP
Add Step



TAP TEST SETTING
Tap the test type, and the parameter you would like to edit.. Swipe up and down to scroll through test parameters.



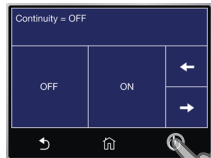
EDIT PARAMETERS

Tap parameter values to edit individually. After you adjust each parameter, tap ENTER () arrow key to save changes.



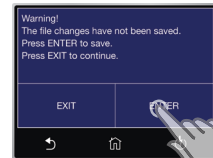
ADJUST PARAMETERS

Continue through each parameter to adjust values based on your application.



EXIT PARAMETERS

Press the Test Screen button to exit out of Parameters.

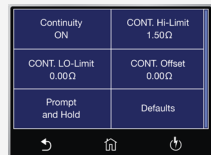


SAVE FILE CHANGES

Press ENTER to save your file changes. You will be redirected to the Test Screen.



Note: During the Edit Parameters step you are able to turn the Continuity Test parameter ON, which allows you to set up: HI-Limit, LO-Limit, and Continuity Offset.



TEST CONNECTION



WARNING: DO NOT TOUCH THE DEVICE UNDER TEST ONCE YOU START THE TEST.

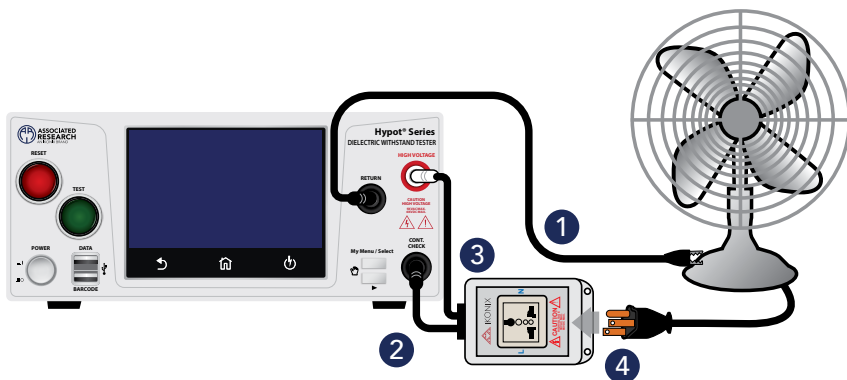
Find parts for Instrument Setup in **Section 2 of your Accessory Box.**

Adapter Box Connections

To increase operator safety, you may elect to use an adapter box for products terminating in either a two-prong or three-prong line cord.

 **Note:** Be sure to enable the Ground Continuity test before moving forward. See page 4.

- 1 Connect the black ground return lead (P/N 2100A-13) to the front panel Return terminal and connect the other end of the lead to the dead metal on the chassis of the DUT (Device Under Test). Check to ensure a solid connection is made between the DUT and the return clip.
- 2 Plug the black lead from the adapter box (P/N 36544) into the CONT. CHECK terminal located on the front panel.
- 3 Plug the white lead from the adapter box into the High Voltage terminal located on the front panel.
- 4 Plug the line cord of the DUT into the adapter box receptacle.



Did You Know?

The **Data** port on the front of the instrument can be used to download test results directly to a USB thumb drive.

The **Barcode** port is compatible with a USB barcode scanner so you can automatically scan product barcodes and run test sequences.



TEST CONNECTION



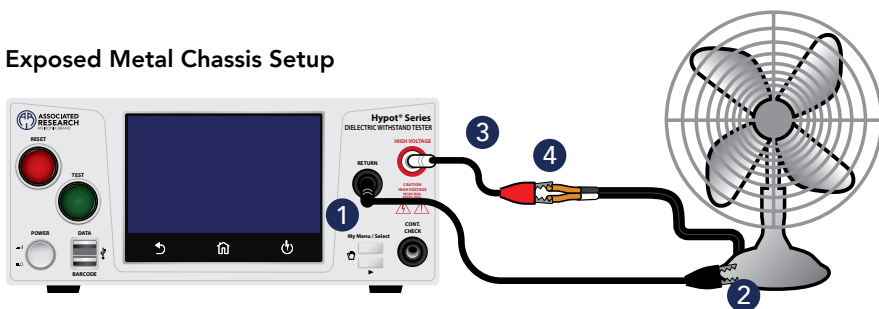
WARNING: DO NOT TOUCH THE DEVICE UNDER TEST ONCE YOU START THE TEST.

Find parts for Instrument Setup in **Section 3 of your Accessory Box.**

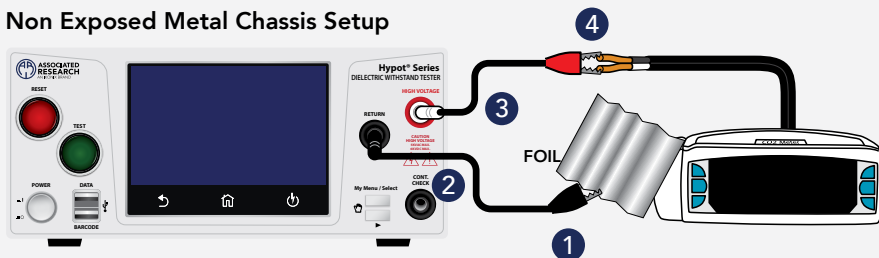
DUT Connections

- 1 Connect the black ground return lead (P/N 2100A-13) to the Return terminal located on the front panel of the instrument.
- 2 Connect the clip end of the return lead (P/N 2100A-13) to the exposed or dead metal on the chassis of the DUT. Always connect the ground return clip first and double check that it has a solid connection to the DUT.
- 3 Connect the white high voltage lead (P/N 4040A-08) to the High Voltage terminal.
- 4 Connect the red clip end of the high voltage lead to the current carrying conductors of the DUT's line and neutral.

Exposed Metal Chassis Setup



Non Exposed Metal Chassis Setup



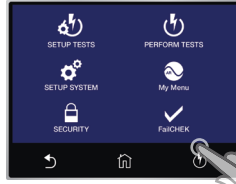
If your chassis does not have any exposed metal, you can wrap the enclosure of the DUT in foil and then connect the return lead to the foil.

PERFORM TESTS



TAP PERFORM TESTS

OR



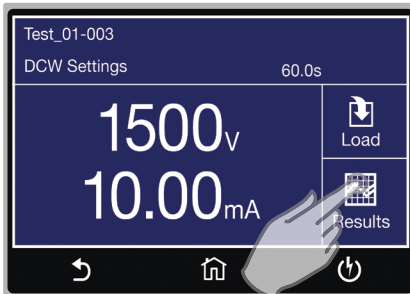
TAP TEST SCREEN



PUSH THE TEST BUTTON TO START THE TEST

RESULTS

After test is complete, the Results icon will be available on the screen.



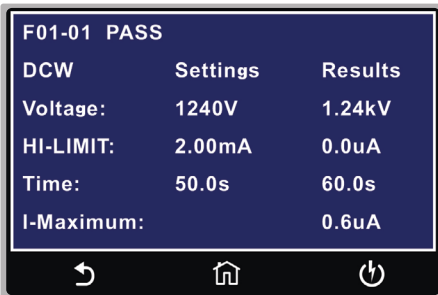
TAP RESULTS

To view your test results.



TAP DESIRED RESULT

To view detailed test results



REVIEW TEST RESULTS



SCAN FOR
VIDEO
LIBRARY



Experts In Electrical Safety Compliance.®



For additional information about these and other key features of the Hypot®, please consult the full Operation and Service Manual or call us toll-free 1-800-858-TEST (8378) or +1-847-367-4077
©2022 Associated Research • arisafety.com

Cal Power

Via Acquanera, 29 22100 COMO
tel. 031.526.566 (r.a.) fax 031.507.984
info@calpower.it www.caltower.it