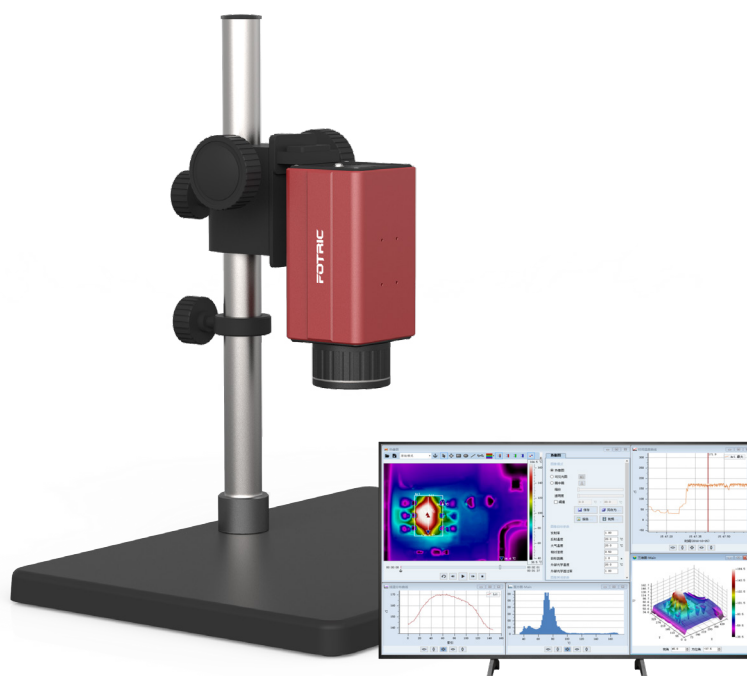


FOTRIC 600_{R&D}

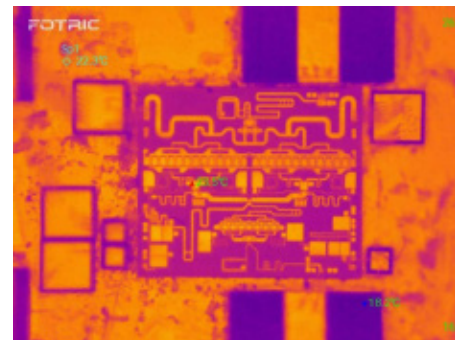
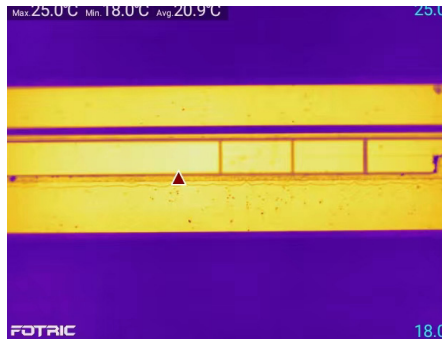
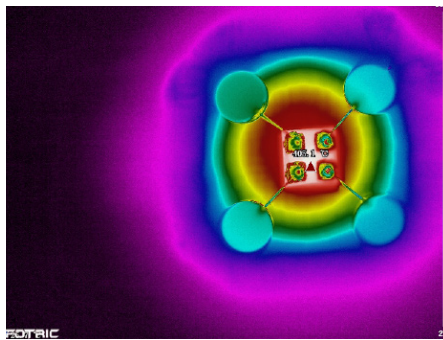


FOTRIC 600_{R&D}

The device adopts cutting-edge hardware including infrared detector, main processing chip, FPGA, power supply chip, etc., which guarantee the quality, performance and stability of the camera.

The thermal imaging camera can be equipped with 30° standard lens for comprehensive overview, or with optional 20μm and 50μm macro lenses to obtain temperature distribution and detailed data of microstructures such as chips.

The thermal imaging camera is equipped with a dedicated R&D test platform, allowing researchers to observe and analyze in a flexible, fine and stable manner.



World-class hardware

FOTRIC is committed to using the best hardware to make the best products.

- France Lynred infrared detector
- SAMSUNG main processing chip
- Xilinx FPGA (USA)
- TI (Texas Instruments) power supply chips

Outstanding performance

FOTRIC 600 R&D's excellent hardware configuration, combined with extraordinary imaging algorithms, results in superior product performance.

- The 640*480 pixel infrared detector provides a thermal map with over 300,000 temperature points as data matrix
- State of the art imaging algorithm significantly reduces noise and boosts image clarity
- Thermal sensitivity of 0.03°C , more sensitive to temperature change and makes more accurate temperature measurement
- High EMC compatibility, effectively prevent electromagnetic interference and electrostatic breakdown

Designed with R&D purposes in mind

FOTRIC 600 R&D is designed for education and research related applications. The simple and elegant design that makes operations intuitive and efficient.

- The test platform allows for easy lifting, rotation, fixation and other practical adjustment movements
- The 20 μ m and 50 μ m lenses help users obtain thermal maps of microstructure temperature distribution and detailed temperature data
- Manual focus offers flexible and accurate focusing and fine thermogram acquisition.

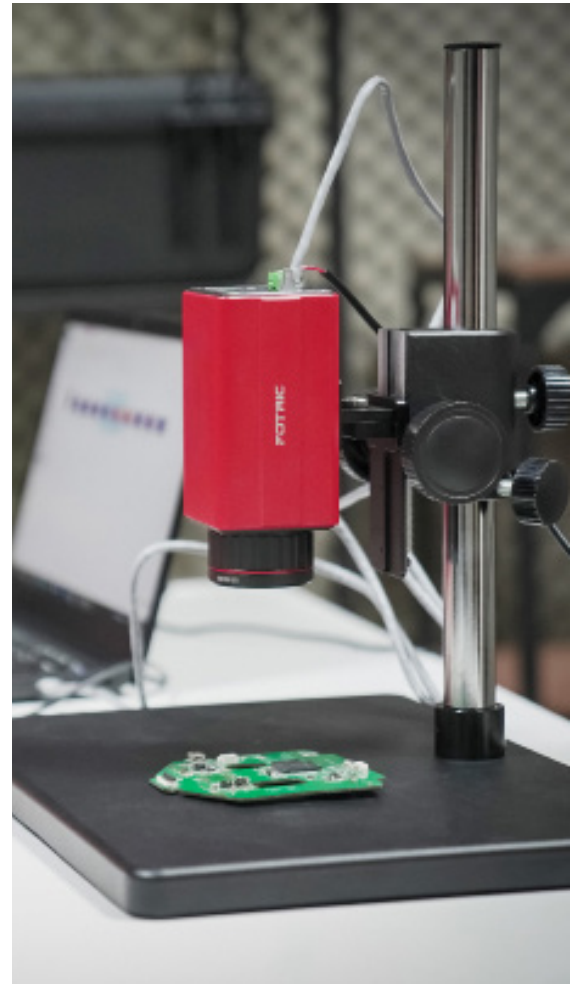
Powerful software support

AnalyzIR, thermal analysis software, is a professional thermal analysis software that matches the FOTRIC 600 R&D Thermal Camera.

The software allows the user to view temperature changes, overall distribution and other information, and to adjust the camera configuration.

AnalyzIR professional thermal analysis software allows the following functions to be implemented:

- Enables the camera to communicate with a PC to display, transmit, record, and analyze full radiometric video streams in real time
- Secondary analysis of the thermal image files, adding, deleting, renaming, moving measurement tools and adjusting the thermal image or full radiometric video
- Modification of the thermal parameters of the thermal image file, including emissivity, reflected temperature, atmospheric temperature, relative humidity, target distance, external optical transmittance, GPS location information, etc.
- Set partial emissivity for individual measurement tools to improve accuracy
- Display, export, save, and overlay time of temperature curves for any measurement tool
- Full radiometric thermal video supports both raw mode and temperature difference mode analysis
- The thermal image file supports histogram, 3D graph, and line temperature distribution display
- Combine thermal images into full-radiation thermal videos or split videos into images.
- Edit customized test report templates and batch process thermal image files. Batch generate of thermal image inspection reports.
- I/O external trigger recording.
- DB, TCP/IP Modbus, RS232 Modbus serial communication and data transfer with external systems.



Specification

Models	FOTRIC 618C R&D Station		FOTRIC 616C R&D Station
Basic Parameters			
Infrared Resolution	640*480		384*288
Detector Type	Uncooled infrared focal plane detector		
Thermal Sensitivity NETD)	< 0.03℃ @30℃ ,30mk		< 0.05℃ @30℃ ,50mk
Infrared Spectral Band	7μm~14μm		
Standard lense	29° *22°		30° *22°
IFOV	0.78mrad		1.3mrad
Minimum focus distance	0.1m		0.15m
Focal length	21.6mm		13mm
Optional Macro Lenses	M20	M50	M50
Focal length	20mm	50mm	50mm
Pixel Size	20μm	50μm	50μm
Focus Type	Manual		
Measurement Analysis			
Temperature Measurement Range	-20℃ -150℃ ; 0℃ -650℃		
Accuracy	± 2℃ or ± 2 %, whichever is greater (ambient temp between15℃ ~35℃)		
Measurement parameters	Emissivity; Ambient temperature; Reflected temperature; Relative humidity; Distance; External optics compensation		
Partial emissivity	Support		
Image display			
Palettes	10 standard palettes and 10 inverted palettes		
Image process	Non-uniform calibration, digital enhancement		
Mirror mode	Left-right, up-down, center		
Video compression standard	H.264		
Radiometric stream	25Hz radiometric stream	30Hz radiometric stream	
Pan-tilt-zoom station compatibility	Support Pelco-D protocol		
Measurement tools	5 points, 10 lines and 10 regions, support Modbus output		
Software	AnalyzeIR		
Network Connection			
Ethernet type	10M/100M/1000M adaptive		
Simultaneous stream	Mainstream and substream: 10; Radiometric stream: 1		
IP connection interface	ONVIF		
Electrical connection			
Power connector	Screw-on wire terminal		
Network connector	Screw-on RJ45 with status indicator LED		
Serial port	RS-485 : 1 input 1 output		

Alarm input/output	Relay: 1 input 1 output, load capacity: 24V, 1.5A Optocoupler: 1 input(5~15mA) 1 output(<35mA) 1 GND, Voltage: 3.3-24V	
Power system		
Power supply	12V/24V DC, PoE	
Power consumption	4W	3W
Reliability and certificates		
Safety standards	GB 4943.1-2011 EN 62368-1:2014+A11:2017; GB/T 19870-2018	
Electromagnetic compatibility	GB/T 18268.1-2010 EN 61326-1:2013 GB 17625.1-2012 EN IEC 61000-3-2:2019 GB/T 17625.2-2007 EN 61000-3-3:2013/A1:2019 GB/T 19870-2018 GB 4824-2019 EN 55032:2015/A11:2020 EN 55035:2017 FCC CFR47 Part15 subpart B	
Protection level	IP40	
Impact	25g, GB/T 2423.5-2019 IEC 60068-2-27:2008	
Vibration	2g, GB/T 2423.10-2008 IEC 60068-2-6:2007	
RoHS compliant	Directive 2011/65/EU and amendment (EU) 2015/863	
Physical parameters		
Working temperature	-20°C -65°C	
Storage temperature	-40°C -70°C	
Relative humidity	< 90%	
Size	112mm*68mm*60mm (without lens or base)	
Weight	485g (without lens or base)	
Outer casing material	Aluminum alloy	

Cal Power

Via Acquanera, 29 22100 COMO
tel. 031.526.566 (r.a.) fax 031.507.984
info@calpower.it www.caltower.it

Contact FOTRIC

✉ info@fotric.com 🏠 www.fotric.com

FOTRIC
CONNECTING THE DIGITAL FUTURE